

# FIRE HERO® VARIO

Art. No. 507103



## CE 0197 EN 15090:2012 HI3 CIAN SRC - Typ F2A

Leather thickness 2,5 – 2,7 mm, waterproof, with CROSSTECH® Laminat Technology preventing bacteria and virus ingress, leg height 28 cm, antistatic, sole Fire 01

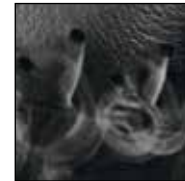
Available sizes: UK 3 – 12, Extra large sizes: UK 12 ½ – 15



507103



HAIX® AF System



HAIX® Climate System



HAIX® Vario Wide Fit System



HAIX® High Durability Cap System



ES Out System



### Upper Material

Waterproof leather, hydrophobic, breathable (5,0 mg/cm<sup>2</sup>/h), 2,5 – 2,7 mm thick, Crosstech MS Cambrelle

### Inner Lining

CROSSTECH® Laminat Technology; 4-layer CROSSTECH® laminate, watertight and breathable. Abrasion-resistant lining with optimized climate comfort for all seasons, espec. for flexible alternating inside and outside use. Superior penetration resistance against blood and body fluids (protection against blood borne bacteria and virus). Increased chemical protection.

### Foot bed

Moisture wicking comfort insert with cushioning effect and antibacterial properties. Separate heel cup ensures optimized cushioning and foot guidance. „AIRFLOW“ channels. „Perfect-Fit“ marking for optimized boot size choice.

### Non-woven insole

Non-woven insole absorbs moisture

### Protective Toe Cap

Anatomically formed and well-padded protective toe cap.

### Puncture Resistant Midsole

Flexible, Lightweight and completely metal free puncture resistant midsole.

### Sole

Extremely slip resistant profiled rubber sole. Optimal performance in water, ice, and snow. Fullfills the highest demands of EN 15090:2012 + SRC

### HAIX® Climate System

HAIX Climate system with Micro-Dry lining releases hot air through vent holes at the top of the boot, keeping the foot cool in all conditions.

### HAIX® MSL System

MicroSoftLight: Improved damping, extremely low weight due to the PU foam across the entire sole area, good cold/heat insulation.

### Sun Reflect

Reduces the heating effect of the upper leather by direct sunlight. Sunlight is reflected by the leather, keeping the leather and the feet cooler.

### Others

Ankle protection, reflectiv stripes, profiled rubber toe cap; pull on loops on both sides, Integrated bending zones in the instep.

|    |    |     |    |     |    |     |    |     |    |     |    |     |    |      |    |      |    |      |    |      |    |      |    |      |    |
|----|----|-----|----|-----|----|-----|----|-----|----|-----|----|-----|----|------|----|------|----|------|----|------|----|------|----|------|----|
| UK | 3  | 3 ½ | 4  | 4 ½ | 5  | 5 ½ | 6  | 6 ½ | 7  | 7 ½ | 8  | 8 ½ | 9  | 9 ½  | 10 | 10 ½ | 11 | 11 ½ | 12 | 12 ½ | 13 | 13 ½ | 14 | 14 ½ | 15 |
| EU | 35 | 36  | 37 | 37  | 38 | 39  | 39 | 40  | 41 | 41  | 42 | 43  | 43 | 44   | 45 | 45   | 46 | 47   | 47 | 48   | 48 | 49   | 50 | 50   | 51 |
| US | 4  | 4 ½ | 5  | 5 ½ | 6  | 6 ½ | 7  | 7 ½ | 8  | 8 ½ | 9  | 9 ½ | 10 | 10 ½ | 11 | 11 ½ | 12 | 12 ½ | 13 | 13 ½ | 14 | 14 ½ | 15 | 15 ½ | 16 |

### HAIX®-Schuhe, Produktions- und Vertriebs GmbH

Auhofstrasse 10, 84048 Mainburg, Germany  
T. +49(0)8751/8625-0, F. +49(0)8751/8625-25  
info@haix.de, www.haix.com